



BYRON BAY SURVEYING

ADVANCED MEASUREMENT AND CONSULTANCY SERVICES
TO PROPERTY AND INFRASTRUCTURE MARKETS

WWW.BYRONBAYSURVEYING.COM.AU

WELCOME TO BYRON BAY SURVEYING

Nestled in a breathtaking part of Australia we're passionate about providing stunning reality capture and exceptional service for property and infrastructure markets

With offices in Byron Bay and Alstonville we are able to service prestigious development projects all over the north coast as well as provide expert advice for overseas ventures.



MORE THAN JUST SURVEYING...

Every project starts with information. We provide the data that underpins and informs critical decision making. We measure, scan, survey, monitor, model, interpret and advise.

With our technical expertise we serve a broad client base of developers, councils, investors, architects & engineers, project managers and government bodies.

On any day of the week we could be constructing commercial property, mapping river beds, laser scanning pipe networks, flying a drone for aerial mapping or modeling infrastructure for BIM projects.



BEFORE YOU START...

Planning is a multi-stage process and we can assist you in making sure that all the right things are in place

to meet your project requirements at every stage of the process. Accurate and reliable information is essential to meet the rigorous requirements of planning applications and public enquiries and we are on hand to deliver the data directly to you.

We work with councils, developers and architects, to deliver a range of survey data and graphic information to ensure you receive the best outcome for your proposed site and infrastructure developments.



Lucas Flumm



Bill Nagel

Byron Bay Surveying has evolved from over 30 years' experience to become a leading surveying firm in the Northern Rivers region of New South Wales.

'If you're wondering how this has been achieved, the simple answer is that we will always prioritize the interests of every client who engages our services. We understand that various factors affect the quality of a piece of land or a structure. No two properties are identical, so it's important to approach each one with an open and objective mind. That's why we employ a team of professionals who are specialists in a broad spectrum of surveying practices.'

Bill Nagel

Managing Director



STRATEGY

SURVEY SCOPE
CONSULTATION

BIM OPTIONS

SURVEYING
TECHNICAL
DUE DILIGENCE

BYRON BAY
SURVEYING

FEASIBILITY & PLANNING

AERIAL MAPPING &
INSPECTIONS

INFRASTRUCTURE
SURVEY

TOPOGRAPHICAL &
UTILITIES MAPPING

BIM OPTIONS

SUBDIVISION
CONSULTATION

WE PROVIDE YOU WITH ADVICE AND SOLUTIONS ACROSS THE LIFE OF YOUR PROJECT.

With over 30 years' experience and training in the latest 3D technology, Byron Bay Surveying offers a comprehensive project management solution to your development proposals.

DESIGN

AERIAL MAPPING &
INSPECTIONS

BIM OPTIONS

SCAN TO BIM

INFRASTRUCTURE
SURVEY

MEASURED
BUILDING SURVEY

SUBDIVISION &
CONSOLIDATION

PRE-CONSTRUCTION

BIM OPTIONS

SCAN TO BIM

INFRASTRUCTURE
SURVEY

MONITORING SUR-
VEYS

AERIAL
INSPECTIONS

We have consultative experience that allows you to undertake your projects with confidence and a thorough understanding of the process.

IN USE

BIM OPTIONS

SCAN TO BIM

INFRASTRUCTURE
SURVEY

AERIAL MAPPING
& INSPECTIONS

LEASE PLAN
CERTIFICATION

DATA MANAGEMENT

MONITORING
SURVEYS

CONSTRUCTION

SITE ENGINEERING
SURVEYS

CONFORMANCE
REPORTING

AS-BUILT
DOCUMENTATION

AERIAL MAPPING
& INSPECTIONS

MONITORING
SURVEYS



TOPOGRAPHICAL SURVEYS

Producing topographical surveys for greenfield, brownfield and development sites, data is captured in either 2D or 3D using the latest Total Station, GPS, laser scanning and drone technology.

Understanding your asset spatially is critical in the planning process.

Topographical surveys are the foundation in accurate decision making for developers, architects, design drafters, engineers and landscapers.

WHERE WE HELP

- BOUNDARY MARKING
- BOUNDARY DEFINITION
- IDENTIFICATION SURVEYS
- DETAIL SURVEYS
- LEVEL SURVEYS
- CERTIFICATE OF TITLE DEFINITIONS
- GPS SURVEYS
- CONTOUR/DETAIL SURVEYS
- SET OUT FOR BUILDING OR CIVIL CONSTRUCTION
- HYDROGRAPHIC SURVEYS
- WORKS AS EXECUTED SURVEYS
- SUBDIVISIONS FOR URBAN, RURAL, COMMERCIAL, INDUSTRIAL, STRATA & COMMUNITY TITLE
- REDEFINITION OR DELIMITATION SURVEYS
- EASEMENT OR LEASE SURVEYS
- COMMERCIAL LEASE AREA SURVEYS
- EXCAVATION & VOLUME SURVEYS



Good survey plans clearly communicate the necessary information to a client before further stages of a planning development can go ahead.

Our approach is to assess and deliver a mapping solution that is as cost effective and comprehensive for your available budget.

Integrated with most of our topographical surveys is a legal boundary definition to outline the full extent of your asset.



AERIAL SURVEYS & INSPECTION

Drones have changed the way we look at the world. We can now access previously impossible vantage points to enhance our surveying methods and inspection abilities.

With Civil Aviation Safety Authority (CASA) licensed pilots, our highly trained team is fully qualified to operate in even the most congested flying zones. Using high resolution imagery, survey grade locating methods and a wealth of experience, our aerial surveys can complete work in a fraction of the time taken by conventional methods.

FEATURED BENEFITS

Cost Effective | Rapid Response
Inaccessible Location Access
Rapid Data Collection | Risk Reduction & Safety Benefits | Improved Data Capture
Array of Deliverables

SOLUTIONS

Building Information Modeling
Topographical Mapping | Aerial Imagery
Property Inspections | Large Earthwork Volumes and Analysis | Visualisations & Site Condition Flythroughs

TALK TO US ABOUT

Development Mapping | Mining Exploration
Industrial, Urban & Rural Inspections
Construction Projects | Commercial Property
Conformance & Volume Analysis
Roads | Bridges | Waterways | Geotechnical



AUSTRALIAN
CIVIL AVIATION
SAFETY AUTHORITY
CASA
LICENSE No.
1036014



AERIAL SURVEYS & INSPECTION

AUSTRALIAN
CIVIL AVIATION
SAFETY AUTHORITY
CASA
LICENSE No.
1036014



BYRON BEACH HOTEL

In May 2020 we carried out an aerial survey of the famous Beach Hotel in Byron Bay.

The project required a full survey of the interior and exterior of the building in order to bring together a masterplan for design.

Accurate Visual Representations (AVRs) are the key to successful planning and project development. Your planning application success relies on the most accurate renditions of the proposed work. We provide the best in modern geospatial data models so that our clients are equipped with the most comprehensive information. We'll work with you to provide the required deliverables for your project.



- Accurate, understandable, realistic information in visual form for project team members and approval boards
- Visual timeline information to easily comprehend the project stages
- Tangible visual information to prepare the stages of understanding of structural development impacts. This can include boundary encroachments & restrictions
- Ideal for urban regeneration projects and upgrades



WWW.BYRONBAYSURVEYING.COM.AU





CONSTRUCTION SURVEYS

Byrong Bay Surveying has extensive experience in construction. Ranging from small residential projects and high-rise buildings to the world's deepest mines and largest natural gas plants.

We understand construction. We communicate, we manage, we're safe and we get the job done.

OUR SERVICES

- RESIDENTIAL & COMMERCIAL BUILDING SET OUT
- CONSTRUCTION ENGINEERING SURVEYING
- LONG TERM PROJECT SURVEYOR ALLOCATION
- WORK-AS-EXECUTED SURVEYS
- PRECISION BIM SURVEYS
- COMPLIANCE REPORTS FOR COUNCIL BUILDING REGULATIONS & DA'S
- FLOOR & FLOOD LEVEL CERTIFICATIONS TO AUSTRALIAN HEIGHT DATUM (AHD)



OUR PLEDGE TO SAFETY

We understand the importance of your Health and Safety as well as our own.

We always make sure to minimise risks in the workplace and maintain a high degree of health and safety for our people, our clients, suppliers & members of the public.

INFRASTRUCTURE SURVEYS

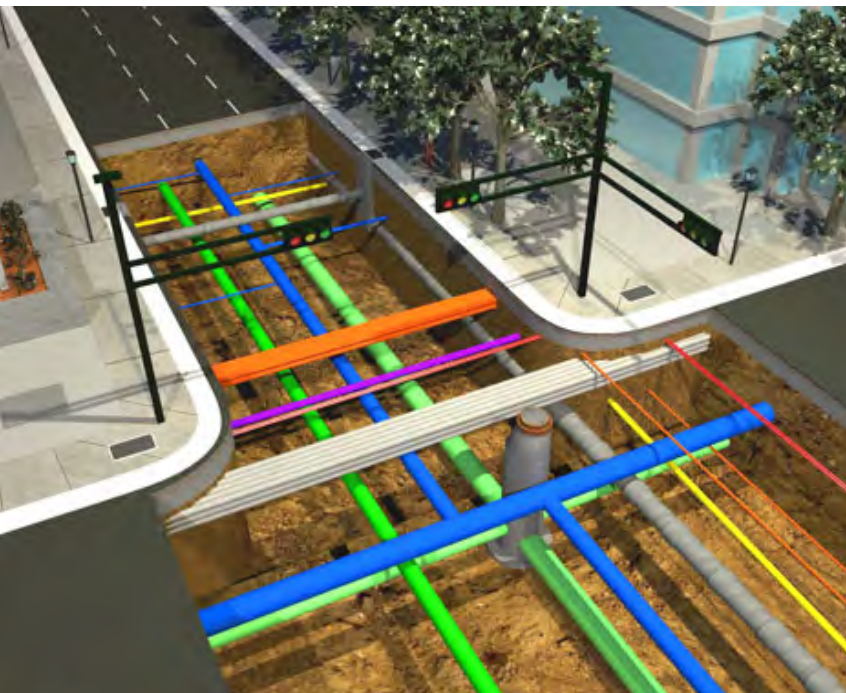
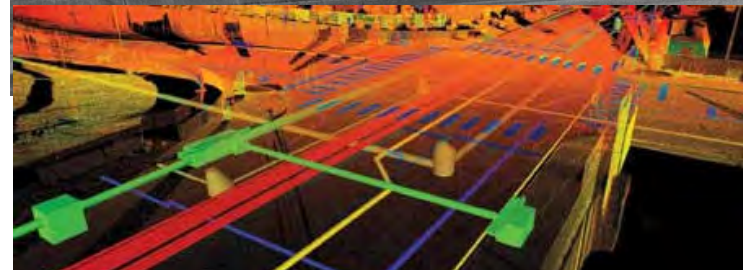
The importance of accurate data for infrastructure is critical.

We provide an effective and timely solution for your project requirements that you can have confidence in.

Our laser scanning experience will set a project off in the right direction with precision 3D modelling of a built environment.

Our collaboration with multiple underground utility locaters also equips us with a highly mobile and competent team.

We provide the design team with an industry standard compliant BIM-ready model, which assists in understanding the relationship and connectivity between below and above ground services & surrounding infrastructure.



OUR SERVICES

- UNDERGROUND UTILITY MAPPING
- STRUCTURAL PLANT BIM
- PRECISION SETOUT
- WORK-AS-EXECUTED SURVEYS
- BIM UNDERGROUND SERVICES



LEVEL CERTIFICATION

Planning applications, housing development, commercial infrastructure and construction often require level certification.

We can act as your registered surveyor to provide you with the necessary documents to certify your project level datum.

We typically measure levels or locations that require certification for a wide range of clients in areas that are prone to flooding, require floor level assessment and planning height data.

We can work with you throughout the life of the development to record your geospatial data and provide ongoing guidance through to certification.

OUR CERTIFICATION

- AUSTRALIAN HEIGHT DATUM (AHD) LEVEL CERTIFICATES FOR FLOOD OR TIDE RELATED FLOOR LEVELS
- BUILDING HEIGHT CERTIFICATE
- BUILDING SET OUT CERTIFICATE
- AS-CONSTRUCTED SURVEY INFORMATION



LAND DEVELOPMENT

Our services take the form of a simple boundary adjustment, a subdivision of one lot into two or a broadacre subdivision for a housing estate.

Byron Bay Surveying has experience in a range of land developments working in conjunction with allied professionals such as Town Planners, Civil Engineers and Environmental consultants for the best outcome for the developer and the community.

Our experience, coupled with a team member approach to working with our clients and the Land Registry, we facilitate the production of compliant plans across a range of properties and projects.



WHAT WE DO

- TORRENS TITLE SUBDIVISIONS
- STRATA SUBDIVISIONS
- COMMUNITY TITLES
- REGULATORY OBSERVATIONS
- CONSOLIDATION OF PARCELS
- CREATION OF EASEMENTS
- LEASE PLANS

We're registered with the appropriate bodies to offer professional expertise in the definition & surveying of property boundaries.





MONITORING SERVICES

The work we do at Byron Bay Surveying is never ending.

The forever changing environment and the forces of nature in our beautiful area are seen and felt on a daily basis.

The smallest changes might not be seen by eye, but over time huge shifts can occur that change infrastructure and critical spatial relationships that can compromise safety, security & integrity.

SAFETY & STABILITY

During the lifecycle of a structure and within the public domain, there is always a need to maintain structural integrity for the safety of everyone. We provide a comprehensive, experienced eye for a range of structural monitoring requirements.



OUR SERVICES

- PC MONITORING FOR RISK IDENTIFICATION
- MARINE INFRASTRUCTURE
- UNDERGROUND TUNNELS & ASSETS
- RAIL TRACKS
- ESTATE DATA MANAGEMENT

OUR WATCH LIST

- TILT
- CRACK-WIDTH
- VIBRATION CONVERGENCE
- DISTORTION
- SETTLEMENT HEAVE
- ROTATION

WHAT WE PROVIDE

- DATA-RICH SURVEY INFORMATION FOR BIM
- REALTIME 24/7 MONITORING SYSTEMS
- EMERGENCY RISK ALERTS
- CRADLE TO GRAVE MONITORING SOLUTIONS



MEASURED BUILDING SURVEYS

OUR BENEFITS

- TANGIBLE, INTERPRETED DATA TO PROVIDE EASE OF UNDERSTANDING THE PLANNED V'S ACTUAL
- MINIMAL ERROR POTENTIAL
- INCREASED PRODUCTIVITY
- DESIGN FULLY INTEGRATABLE INTO EXISTING ENVIRONMENT
- ABILITY TO INCORPORATE TOPOGRAPHY AND UTILITIES DATA FOR FLOOR PLANS, ELEVATIONS AND SECTIONS
- TRUVIEW GLOBAL AND INSTANT POINT CLOUD ACCESS
- 3D PLANT REFURBISHMENT AND REPLACEMENT MODELS

With an extensive range of experience in BIM, Byron Bay Surveying are the local experts in providing accurate and assessable measured building surveys.

We have a broad spectrum of technology, including the latest 3D laser scanning equipment and UAV's to collect the most accurate data.

Our team of experienced staff provides you with sophisticated data extraction and interpretation, to create the most comprehensive models for your planning and structural development needs.



Surveys are delivered in a variety of 2D, 3D and BIM-compatible formats and scan data can also be accessed through panoramic point cloud viewers to provide instant remote access and dimensional interrogation.





Using the most up-to-date technology, our experienced surveyors have a reputation for rapid response, expertise, accuracy and timely delivery.



We use the best names in the field to provide you with the most accurate data for project planning. Our deliverables are presented in a way that provides our clients & stakeholders with the most comprehensive and innovative forms of modern Information to satisfy and fully understand their planning possibilities.

INNOVATION

Innovation is at the heart of what we do. With over 30 years of expertise in the field and with a constant drive to track and incorporate the latest measurement & processing technology into our everyday workflows, our team continues to pioneer the latest & best technology for the benefit of our clients.



WHY CHOOSE US?

Byrong Bay Surveying has evolved from over 30 years' experience to become a leading surveying firm in the Northern Rivers region of New South Wales.

We're a small team of experts with decades of relevant industry experience. Not only do we have an extensive track record of successful projects, but we're also dedicated to continuous development, so we can keep abreast of progress in the field and incorporate it into our practice.

- PRECISION & ATTENTION TO DETAIL
- TRANSPARENT, THOROUGH & CLEAR COMMUNICATION
- PEAK PROFESSIONALISM AT ALL TIMES
- REGISTERED TO PROVIDE LEGAL BOUNDARY DEFINITION ADVICE



Our services aren't confined to one place only. While we pride ourselves on being a High-Tec local business, we also have work experience across four continents and are able to undertake projects anywhere in the world

More than anything, Byron Bay Surveying is committed to producing timely, accurate geospatial information.

We are a valuable member of your team and will always find a best-fit solution for your specific project requirements.



AUSTRALIAN
CIVIL AVIATION
SAFETY AUTHORITY
CASA
LICENSE No.
1036014



WWW.BYRONBAYSURVEYING.COM.AU

